

GROUP 34

REAR SUSPENSION

GENERAL

OUTLINE OF CHANGES

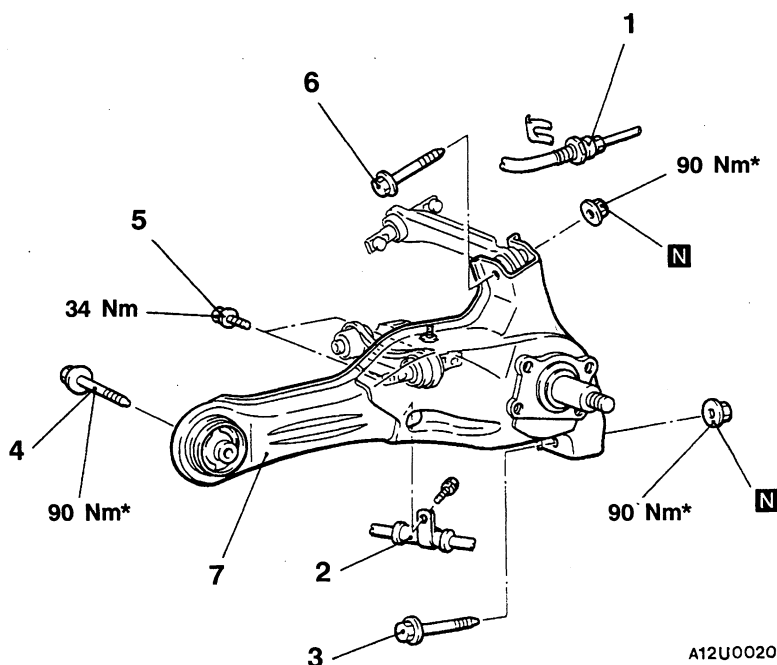
- The service procedures for the trailing arm have been changed to correspond to the change of the rear speed sensors.
Applicable models: Vehicles with ABS

TRAILING ARM

REMOVAL AND INSTALLATION

Pre-removal and Post-installation Operation

- Backing Plate or Disc Brake Adapter Removal and Installation (Refer to GROUP 35B – Rear Drum Brake or Rear Disc Brake.)



A12U0020

Removal steps

- Lifting point
- 1. Brake hose
- 2. Parking brake cable
- 3. Lower arm and trailing arm connection
- 4. Trailing arm and body connection
- 5. Control link and trailing arm
- 6. Upper link and trailing arm connection
- 7. Trailing arm

Caution

- * Indicates parts which should be temporarily tightened, and then fully tightened with the vehicles on the ground in the unladen condition.

NOTE

For each service point, refer to Basic Manual.

NOTES